



'INSPIRE, RESPECT, SUCCEED'

NEWSLETTER
4TH OCTOBER

Kenbrook Road, Hucknall, Nottingham
NG15 8HY

Tel: 0115 9638845 Fax: 9638176

E-mail: office@beardallfields.org.uk

Website: www.beardallfields.org.uk

Upcoming Dates:

Week beginning 7th October

- Wednesday 9th and Thursday 10th October: Y1, Y2, Y3 and Y6 Parents' Evening
- Wednesday 9th-Friday 11th October: Y5 Residential

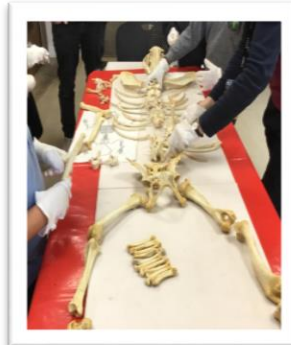
This half-term:

- Tuesday 15th and Wednesday 16th October: PTA Beetle Drive <https://shorturl.at/yF8Zb>
- Wednesday 16th October: Open Evening for new pupils at 5pm
- Friday 18th October: Y5 Residential Assembly for Families at 9:05am
- Friday 18th October : Flu Immunisation

Well done to all our Year 6 children who have completed their first mock SATs tests this week. It helps prepare them for their SATS in May and it is an amazing way to monitor their progress throughout the year.

Year 3 Cresswell Crag

This week Year 3 have enjoyed a visit to Cresswell Crag. The trip helped with their understanding of the Stone Age, for their topic this half term. The children especially enjoyed their tour of the caves.



Parents' Evening

It was lovely to see so many of you this week for our first Parents' Evening. Next week we welcome more of you for our remaining year groups. If you were unable to make the dates and/or times this time around, please contact your child's class teacher and we will happily make another appointment to see you.

Attendance

Our attendance policy has been updated as per National guidelines. Please find this on our website, under policies or using the link below.

beardall-fields-attendance-policy-2024.pdf (primarysite-prod-sorted.s3.amazonaws.com)



'INSPIRE, RESPECT, SUCCEED'

NEWSLETTER
4TH OCTOBER

Kenbrook Road, Hucknall, Nottingham
NG15 8HY

Tel: 0115 9638845 Fax: 9638176

E-mail: office@beardallfields.org.uk

Website: www.beardallfields.org.uk

School Dates

We have posted on individual class Dojo pages today any dates of interest for you for the rest of the year. We hope this will allow you to plan ahead and participate as much as you can in our school community. We will not change these dates unless extenuating circumstances arise and give as much notice as reasonably expected should this happen.

Please note our next INSET day is Monday 2nd June.

Harvest

Thank you for all your extremely kind donations as part of our Harvest celebration in school today. We had to add another table as we were inundated with your generosity. The children had an assembly in class today learning all about some of the traditions of harvest. The theme of this was 'Being Thankful', so children have also added to our collections a sentence or picture about something they are thankful for today. Donations will be delivered to the Hucknall Food Bank next week. Thank you.



Beetle Drive

We are delighted to be hosting our very own Beetle Drive on Tuesday 14th and Wednesday 15th October from 2-3pm.

If you aren't sure what a Beetle Drive is please don't let this put you off. It is a fun, fast-paced dice game for all ages to enjoy and an opportunity for our school community to come together. Enjoyment is guaranteed; the luck of the die is not.

Please follow the QR code or <https://shorturl.at/yF8Zb> to book your tickets with your child.



'INSPIRE, RESPECT, SUCCEED'

NEWSLETTER
4TH OCTOBER

Kenbrook Road, Hucknall, Nottingham
NG15 8HY

Tel: 0115 9638845 Fax: 9638176

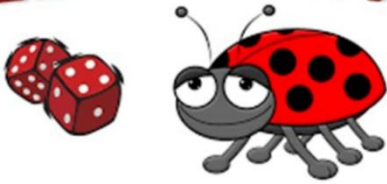
E-mail: office@beardallfields.org.uk

Website: www.beardallfields.org.uk

If a success, we will look to host another Beetle Drive in the evening later in the year.

We look forward to seeing as many of you as possible at the event.

BEETLE DRIVE



Breakfast Club Spaces

We have a limited number of spaces available in our breakfast club. If interested, please email outofschoolclubs@beardallfields.org.uk where Mrs. Laverick, our club manager, will be able to assist you with information and booking.

Attendance

School Attendance Target	97%
Attendance this week	96%
Class(es) with the highest attendance	3S – 100%



'INSPIRE, RESPECT, SUCCEED'

NEWSLETTER
4TH OCTOBER

Kenbrook Road, Hucknall, Nottingham
NG15 8HY

Tel: 0115 9638845 Fax: 9638176

E-mail: office@beardallfields.org.uk

Website: www.beardallfields.org.uk

Supporting Learning At Home

There are several ways you can help your child with learning at home. Log onto any of the following sites we have subscribed to or pick up a book from The Reading Olympiad. If you have any questions about log in details, or wish for work to be set for your child, please contact your class teacher.

Mathematics

Reading



Science

Music



Whole Curriculum

